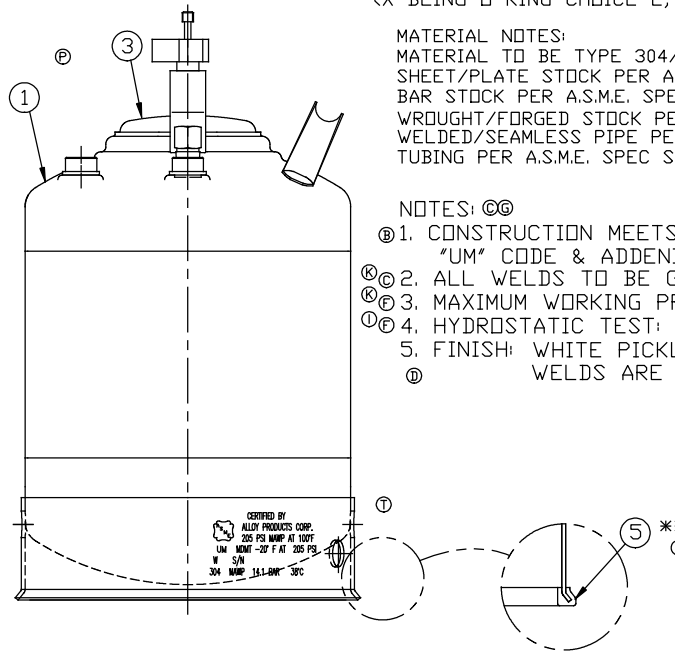
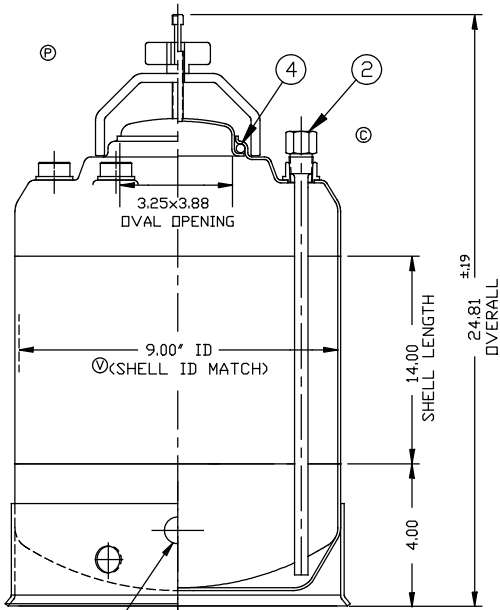
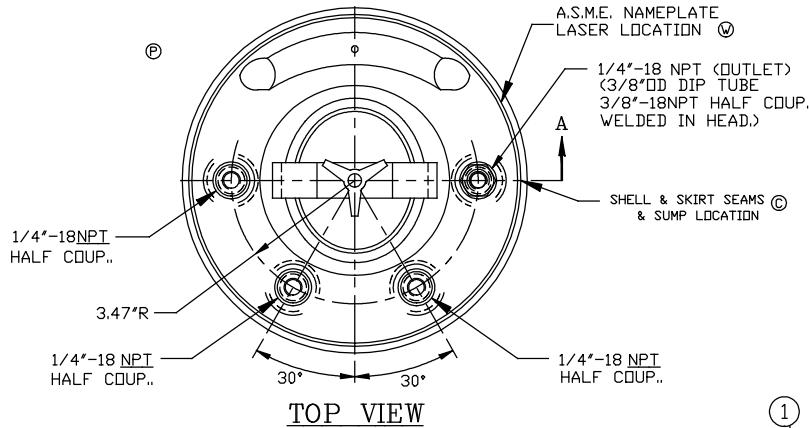


REVISION
A) 9-20-85
c/08500
B) 12-22-87
c/08845
C) 11-09-95
c/012087
D) 04-24-96
c/012161
E) 07-29-96
c/012322
F) 5-6-98
c/013006
G) 5-6-98
c/012677
H) 5-6-98
c/012743
I) 6-06-2000
c/013280
J) 6-06-2000
c/013332
K) 6-06-2000
c/013710
L) 6-06-2000
c/013461
M) 7-11-2001
c/014101
N) 9-28-2006
c/015555
O) 10-24-2006
c/015614
P) 3-26-2008
c/015884
Q) 8-21-2008
c/015938
R) 10-13-2008
c/015992
S) 3-16-2010
c/016194
T) 1-04-2013
c/016694
U) 6-04-2013
c/016771
V) 02-15-2017
c/017425
W) 1-25-2018
c/017692



ITEM	DWG./PART NO.	MATERIAL	QTY.
①	C208-0304-00	SDC 9"ID TANK WELDMNT	304 1
②	A206-4413-00	DIP TUBE ASSEMBLY	304 1
③	C506-0493-00	VACUUM CLOSURE LID	304 1
④	A100-0100-00 A100-0161-00 A100-0361-00	CLOSURE SEAL O-RING	① E.P.D.M. ② VITON ③ T.E.V. 1
⑤	A109-0003-00	RUBBER BOOT	EPDM 1

* SEE CURRENT SHOP ORDER FOR O-RING TYPE TO BE USED.

** ITEM 5 IS OPTIONAL. INSTALL ONTO SKIRT
 ① WHEN P/N B501-0471-00-X-R IS ORDERED.
 (X BEING O-RING CHOICE E, F, OR V).

MATERIAL NOTES:
 MATERIAL TO BE TYPE 304/316 STAINLESS STEEL.
 SHEET/PLATE STOCK PER A.S.M.E. SPEC SA-240.
 BAR STOCK PER A.S.M.E. SPEC SA-479.
 WROUGHT/FORGED STOCK PER A.S.M.E. SPEC SA-182.
 WELDED/SEAMLESS PIPE PER A.S.M.E. SPEC SA-312.
 TUBING PER A.S.M.E. SPEC SA-249.

NOTES: ①②

- ①. CONSTRUCTION MEETS LATEST A.S.M.E. "UM" CODE & ADDENDA.
- ②. ALL WELDS TO BE GTAW (OR) AND GMAW.
- ③. MAXIMUM WORKING PRESSURE: 205 P.S.I.G. @ 100°F.
- ④. HYDROSTATIC TEST: 308 P.S.I.G. ①②
- ⑤. FINISH: WHITE PICKLE.
- ⑥. WELDS ARE AS WELDED.

BT-1 BT-15	CAL001	NOTICE THIS DRAWING AND THE DATA SHOWN ARE PROPRIETARY INFORMATION AND SHALL NOT BE USED WITHOUT APPROVAL OF ALLOY PRODUCTS CORP.	UNLESS OTHERWISE SPECIFIED	DRAWN	DATE	TITLE
			TOLERANCES .XX DECIMALS ± .030 .XXX DECIMALS ± .015 ANGLES ± 1°	B		
			REMOVE BURRS & SHARP EDGES	APPROVED		
				JSH		
				SCALE		
				NONE		
				ALLOY PRODUCTS CORP. WAUKESHA, WISCONSIN	DWG. NO.	REVISION
					B501-0471-00	W