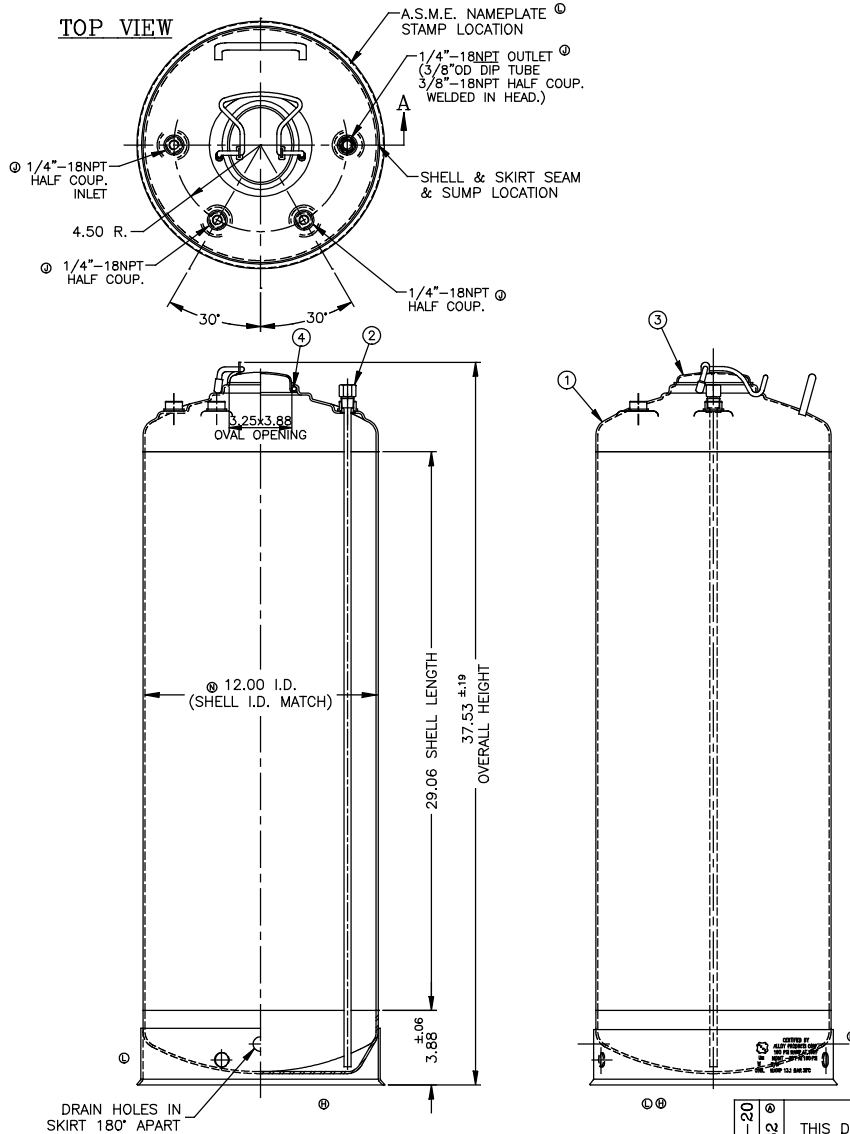


REVISION
12-9-97
012677
7-22-99
012988
7-22-99
013280
7-22-99
013332
7-22-99
013461
7-23-2001
014101
5-04-2004
013765
5-28-2008
015517
10-18-2008
015814
4-21-2008
015884
7-23-2008
015938
7-19-2011
016278
1-15-2013
016694
1-15-2018
017425



SECTION "A"

ITEM	DWG./PART NO.	MATERIAL	QTY.
1	C208-0432-00	SOC 12" TANK WELDMENT	316L 1
2	A206-1552-00	DIP TUBE ASSEMBLY	316L 1
3	B506-0048-00	CLOSURE LID ASSEMBLY	316L 1
* 4	A100-0100-00 A100-0161-00 A100-0361-00	CLOSURE SEAL O-RING	E.P.D.M. VITON T.E.V. 1

* SEE CURRENT SHOP ORDER FOR O-RING TYPE TO BE USED.

MATERIAL NOTES:
 MATERIAL TO BE TYPE 304/316L STAINLESS STEEL.
 SHEET/PLATE STOCK PER A.S.M.E. SPEC. SA-240.
 BAR STOCK PER A.S.M.E. SPEC. SA-479.
 WROUGHT/FORGED STOCK PER A.S.M.E. SPEC. SA-182.
 WELDED OR SEAMLESS PIPE PER A.S.M.E. SPEC. SA-312.
 TUBING PER A.S.M.E. SPEC. SA-249.

- NOTES:
 1. CONSTRUCTION MEETS LATEST A.S.M.E. "UM" CODE & ADDENDA.
 2. ALL WELDS TO BE GTAW (OR) AND GMAW.
 3. MAXIMUM WORKING PRESSURE: 190 P.S.I.G. @ 100°F.
 4. HYDROSTATIC TEST: 247 P.S.I.G.
 5. TANK WILL NOT BE FULLY DRAINABLE WITH THIS OUTLET DESIGN.
 6. FINISH: WHITE PICKLE. WELDS ARE AS WELDED.

BT-19 BT-20 CAL0882	NOTICE THIS DRAWING AND THE DATA SHOWN ARE PROPRIETARY INFORMATION AND SHALL NOT BE USED WITHOUT APPROVAL OF ALLOY PRODUCTS CORP.		DWG. UNITS ARE IN INCHES UNLESS OTHERWISE SPEC'D.	DRAWN MS	DATE (REDRAWN) 5-03-2004	12" ID TANK ASSEMBLY 16 GALLONS A.S.M.E.	316L REV. N
			TOLERANCES .XX DECIMALS ±.030 .XXX DECIMALS ±.015 ANGLES ±1°	APPR'D RW	PLT'D SCALE 1/8		
ALLOY PRODUCTS CORP WAUKESHA, WISCONSIN			DWG. NO. B501-4774-00				