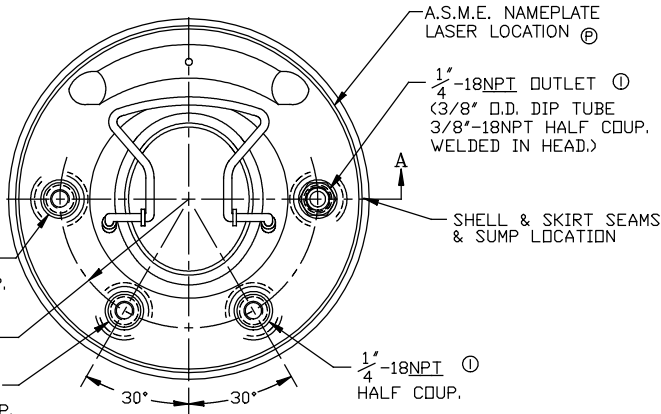
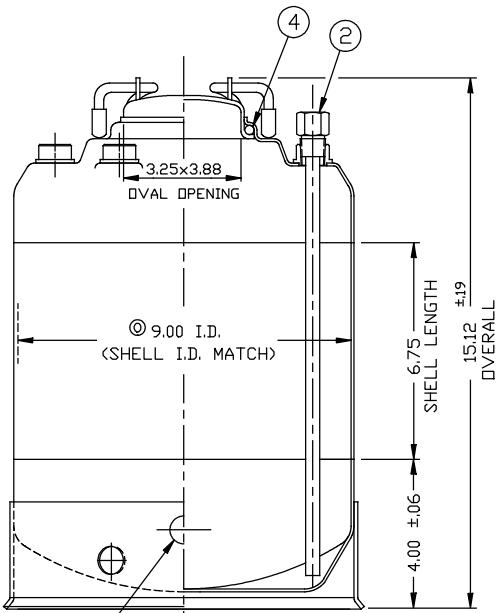


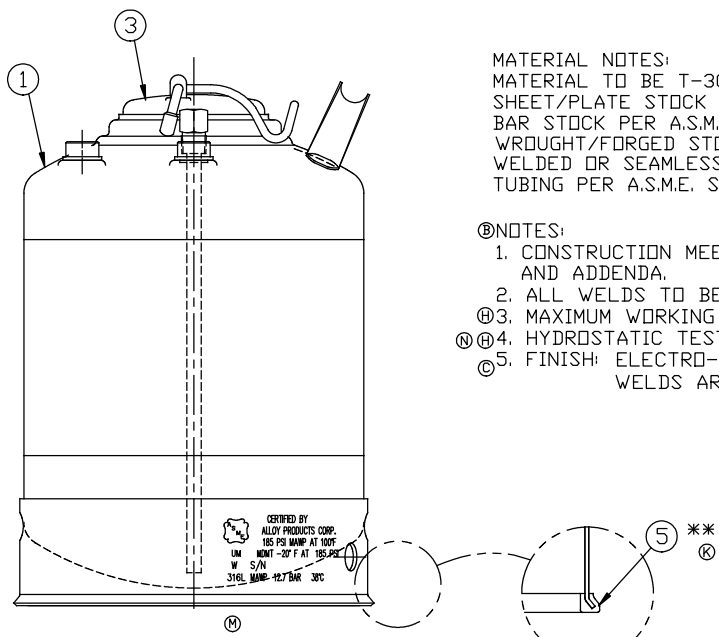
REVISION
A 07-11-96
C/O12322
B 11-5-97
C/O12677
C 8-20-1999
C/O13280
D 8-20-1999
C/O13332
E 8-20-1999
C/O13461
F 7-18-2001
C/O14101
G 7-18-2006
C/O15555
H 10-16-2006
C/O15614
I 3-19-2008
C/O15884
J 7-30-2008
C/O15938
K 10-10-2008
C/O15992
L 3-29-2010
C/O16194
M 1-17-2013
C/O16694
N 5-28-2013
C/O16771
O 3-10-2017
C/O17425
P 1-25-2018
C/O17692



TOP VIEW



SECTION "A"



ITEM	DWG./PART NO.	MATERIAL	QTY.
(1)	C208-0334-00	SDC 9" TANK WELDMENT 316L	1
(2)	A206-1355-00	DIP TUBE ASSEMBLY 316L	1
(3)	B506-0147-00	CLOSURE LID ASSEMBLY 316L	1
(4)	A100-0100-00 A100-0161-00 A100-0361-00	CLOSURE SEAL O-RING (A) E.P.D.M. (B) VITON (C) T.E.V.	1
(5)	A109-0003-00	RUBBER BOOT EPDM	1

*SEE CURRENT SHOP ORDER FOR O-RING TYPE TO BE USED.

** ITEM 5 IS OPTIONAL. INSTALL ONTO SKIRT WHEN P/N B501-4790-00-X-R IS ORDERED. (X BEING O-RING CHOICE E, F, OR V).

MATERIAL NOTES:
MATERIAL TO BE T-304/316L STAINLESS STEEL. SHEET/PLATE STOCK PER A.S.M.E. SPEC SA-240. BAR STOCK PER A.S.M.E. SPEC SA-479. WROUGHT/FORGED STOCK PER A.S.M.E. SPEC SA-182. WELDED OR SEAMLESS PIPE PER A.S.M.E. SPEC SA-312. TUBING PER A.S.M.E. SPEC SA-249.

- (B) NOTES:
1. CONSTRUCTION MEETS LATEST A.S.M.E. "UM" CODE AND ADDENDA.
2. ALL WELDS TO BE GTAW (OR) AND GMAW.
3. MAXIMUM WORKING PRESSURE: 185 P.S.I.G. @ 100 °F.
(D) 4. HYDROSTATIC TEST: 278 P.S.I.G.
(C) 5. FINISH: ELECTRO-POLISH, WELDS ARE AS WELDED.

BT-23	BT-23	CALO446	NOTICE THIS DRAWING AND THE DATA SHOWN ARE PROPRIETARY INFORMATION AND SHALL NOT BE USED WITHOUT APPROVAL OF ALLOY PRODUCTS CORP.	UNLESS OTHERWISE SPECIFIED	DRAWN PH	DATE 10-02-95	TITLE 9" I.D. TANK ASSEMBLY 3 GALLONS W/ STD. METAL SKIRT A.S.M.E. 316L
				TOLERANCES .XX DECIMALS ± .030 .XXX DECIMALS ± .015 ANGLES ± 1°	APPROVED PE		
BT-2				REMOVE BURRS & SHARP EDGES	SCALE NONE	DWG. NO. B501-4790-00	REVISION P

ALLOY PRODUCTS CORP.
WAUKESHA, WISCONSIN