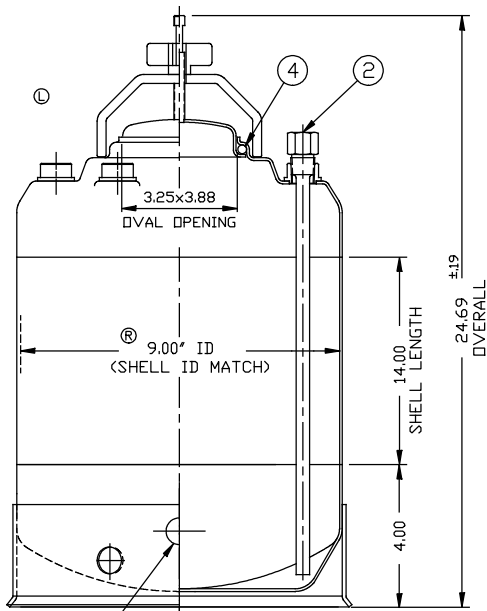
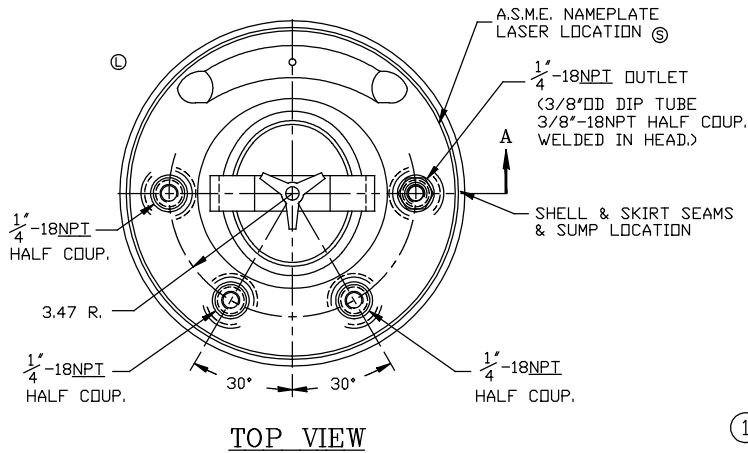
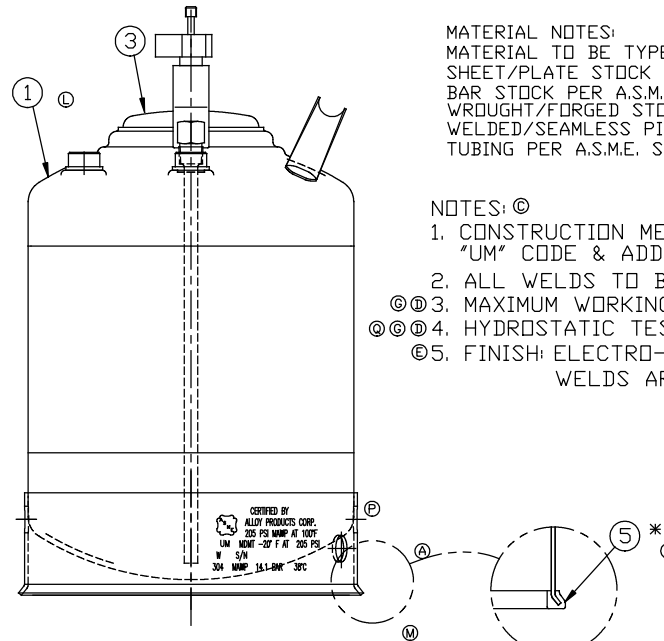


REVISION
A) 04-24-96
C) 012161
B) 07-29-96
C) 012322
C) 12-12-97
C) 012677
D) 5-6-98
C) 013006
E) 6-06-2000
C) 013280
F) 6-06-2000
C) 013332
G) 6-06-2000
C) 013710
H) 6-06-2000
C) 013461
I) 7-11-2001
C) 014101
J) 9-28-2006
C) 015555
K) 10-24-2006
C) 015614
L) 3-26-2008
C) 015884
M) 8-22-2008
C) 015938
N) 10-13-2008
C) 015992
O) 3-16-2010
C) 016194
P) 1-10-2013
C) 016694
Q) 6-04-2013
C) 016771
R) 1-25-2018
C) 017425
S) 1-25-2018
C) 017692



2 DRAIN HOLES IN SKIRT - 180° APART.

SECTION "A"



ITEM	DWG./PART NO.	MATERIAL	QTY.
(1)	C208-0304-00	SDC 9" ID TANK WELDMNT 304	1
(2)	A206-4424-00	DIP TUBE ASSEMBLY 304	1
(3)	C506-0494-00	VACUUM CLOSURE LID 304	1
(4)	A100-0100-00 A100-0161-00 A100-0361-00	CLOSURE SEAL O-RING (E.P.D.M., VITON, T.E.V.)	1
(5)	A109-0003-00	RUBBER BOOT EPDM	1

*SEE CURRENT SHOP ORDER FOR O-RING TYPE TO BE USED.

**ITEM 5 IS OPTIONAL. INSTALL ONTO SKIRT WHEN P/N B501-4910-00-X-R IS ORDERED. (X BEING O-RING CHOICE E, F, OR V).

MATERIAL NOTES:
MATERIAL TO BE TYPE 304/316 STAINLESS STEEL. SHEET/PLATE STOCK PER A.S.M.E. SPEC. SA-240. BAR STOCK PER A.S.M.E. SPEC. SA-479. WROUGHT/FORGED STOCK PER A.S.M.E. SPEC. SA-182. WELDED/SEAMLESS PIPE PER A.S.M.E. SPEC. SA-312. TUBING PER A.S.M.E. SPEC. SA-249.

NOTES: (C)

- CONSTRUCTION MEETS LATEST A.S.M.E. "UM" CODE & ADDENDA.
- ALL WELDS TO BE GTAW (OR) AND GMAW.
- MAXIMUM WORKING PRESSURE: 205 P.S.I.G. @ 100°F.
- HYDROSTATIC TEST: 308 P.S.I.G.
- FINISH: ELECTRO-POLISH INSIDE & OUT. WELDS ARE AS WELDED.

BT-1 BT-15	CAL001	NOTICE THIS DRAWING AND THE DATA SHOWN ARE PROPRIETARY INFORMATION AND SHALL NOT BE USED WITHOUT APPROVAL OF ALLOY PRODUCTS CORP.	UNLESS OTHERWISE SPECIFIED	DRAWN PH	DATE	TITLE 9" ID TANK ASSEMBLY 5 GALLON W/ METAL SKIRT & VAC. LID A.S.M.E. 304
			TOLERANCES .XX DECIMALS ± .030 .XXX DECIMALS ± .015 ANGLES ± 1°	APPROVED PE	11-10-95	
			REMOVE BURRS & SHARP EDGES	SCALE NONE		
			ALLOY PRODUCTS CORP. WAUKESHA, WISCONSIN		DWG. NO.	B501-4910-00
						REVISION S