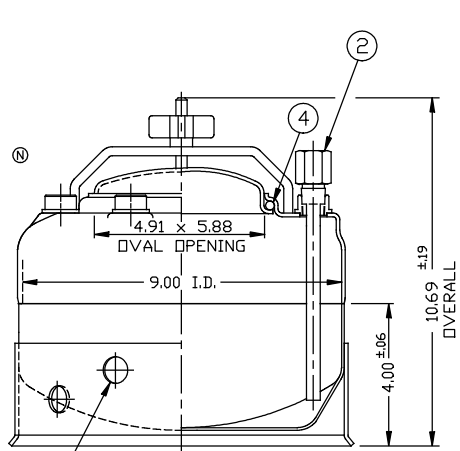
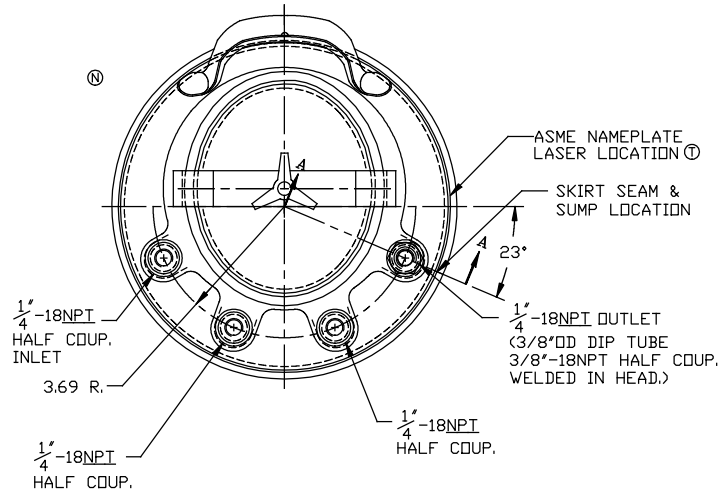
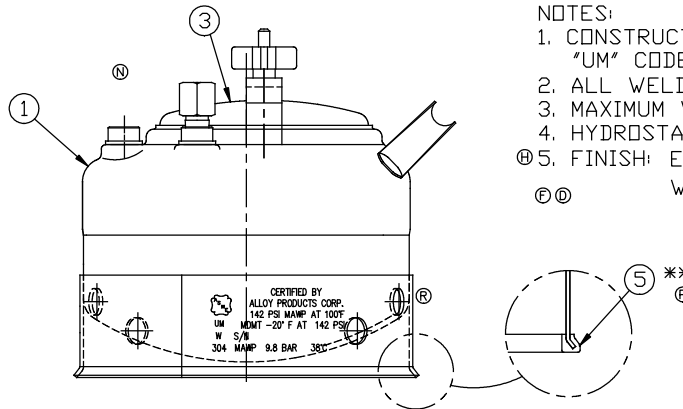


REVISION
A 6-17-94
C/O 11554
B 8-5-94
C/O 11598
C 6-19-2000
C/O 12087
D 6-19-2000
C/O 12161
E 6-19-2000
C/O 12322
F 6-19-2000
C/O 12677
G 6-19-2000
C/O 12743
H 6-19-2000
C/O 13280
I 6-19-2000
C/O 13332
J 6-19-2000
C/O 13461
K 7-13-2001
C/O 14101
L 9-28-2006
C/O 15555
M 10-17-2006
C/O 15614
N 4-22-2008
C/O 15884
O 8-21-2008
C/O 15938
P 10-14-2008
C/O 15922
Q 3-24-2010
C/O 16194
R 1-14-2013
C/O 16694
S 6-11-2013
C/O 16771
T 1-23-2018
C/O 17692



2 DRAIN HOLES IN SKIRT - 180° APART.

SECTION "A-A"



ITEM	DWG./PART NO.	MATERIAL		QTY.
ⓐ ①	C208-0318-00	LDC 9" TANK WELDMENT	304	1
ⓐⓑⓐ ②	A206-4434-00	DIP TUBE ASSEMBLY	304	1
ⓐⓐ ③	C506-0498-00	VAC. CLOSURE LID ASS'Y	304	1
* ④	A100-0376-00 A100-0280-00 A100-0383-00	CLOSURE SEAL O-RING	ⓐ E.P.D.M. ⓑ VITON ⓐ T.E.V.	1
** ⑤	A109-0003-00	RUBBER BOOT	EPDM	1

* SEE CURRENT SHOP ORDER FOR O-RING TYPE TO BE USED.

ⓐ ** ITEM 5 IS OPTIONAL, INSTALL ONTO SKIRT WHEN P/N B530-0712-00-X-R IS ORDERED, (X BEING O-RING CHOICE E, F, OR V).

MATERIAL NOTES:
MATERIAL TO BE TYPE 304 STAINLESS STEEL, SHEET/PLATE STOCK PER A.S.M.E. SPEC. SA-240, BAR STOCK PER A.S.M.E. SPEC. SA-479, WROUGHT/FORGED STOCK PER A.S.M.E. SPEC. SA-182, WELDED OR SEAMLESS PIPE PER A.S.M.E. SPEC. SA-312, TUBING PER A.S.M.E. SPEC. SA-249.

NOTES:

- CONSTRUCTION MEETS LATEST A.S.M.E. "UM" CODE AND ADDENDA.
- ALL WELDS TO BE GTAW (OR) AND GMAW.
- MAXIMUM WORKING PRESSURE: 142 P.S.I.G. @ 100°F.
- HYDROSTATIC TEST: 213 P.S.I.G. ⓐⓐ
- FINISH: ELECTRO-POLISH INSIDE & OUT, WELDS ARE AS WELDED.

BT-8 BT-15	NOTICE	UNLESS OTHERWISE SPECIFIED	DRAWN	DATE	TITLE
	THIS DRAWING AND THE DATA SHOWN ARE PROPRIETARY INFORMATION AND SHALL NOT BE USED WITHOUT APPROVAL OF ALLOY PRODUCTS CORP.	TOLERANCES .XX DECIMALS ± .030 .XXX DECIMALS ± .015 ANGLES ± 1°	REMOVE BURRS & SHARP EDGES	SN APPROVED JSH SCALE NONE	6-10-91
		ALLOY PRODUCTS CORP. WAUKESHA, WISCONSIN	DWG. NO.	B530-0712-00	
				REVISION	T