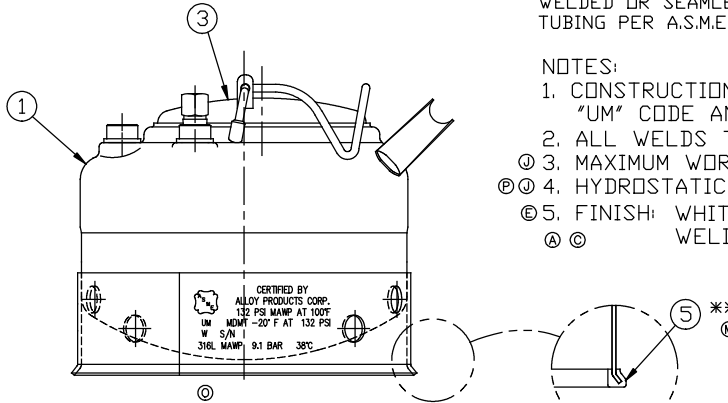
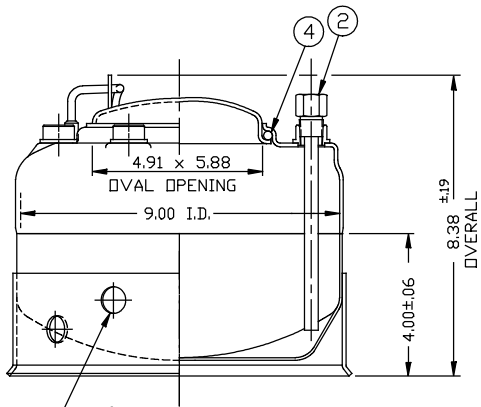
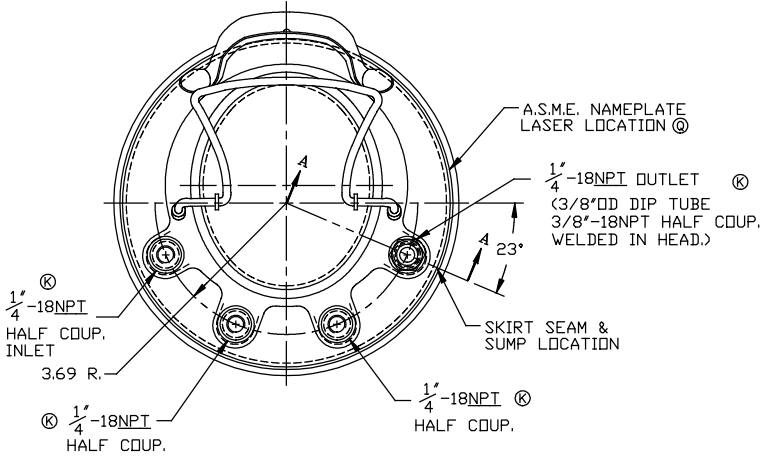


REVISION
A 6-21-2000
C/O12161
B 6-21-2000
C/O12322
C 6-21-2000
C/O12677
D 6-21-2000
C/O12743
E 6-21-2000
C/O13280
F 6-21-2000
C/O13332
G 6-21-2000
C/O13461
H 7-25-2001
C/O14101
I 9-26-2006
C/O15555
J 10-20-2006
C/O15614
K 4-21-2008
C/O15884
L 8-11-2008
C/O15938
M 10-15-2008
C/O15992
N 4-9-2010
C/O16194
O 2-06-2013
C/O16694
P 6-04-2013
C/O16771
Q 01-22-2018
C/O17692



ITEM	DWG./PART NO.	MATERIAL	QTY.
①	C208-0352-00	LOC 9" TANK WELDMENT	316L 1
②	A206-1737-00	DIP TUBE ASSEMBLY	316L 1
③	C506-0066-00	CLOSURE LID ASSEMBLY	316L 1
* ④	A100-0376-00	CLOSURE SEAL O-RING	④ E.P.D.M.
	A100-0280-00		④ VITON
** ⑤	A109-0003-00	RUBBER BOOT	④ T.E.V.
			EPDM 1

* SEE CURRENT SHOP ORDER FOR O-RING TYPE TO BE USED.

** ITEM 5 IS OPTIONAL. INSTALL ONTO SKIRT WHEN P/N B530-2077-00-X-R IS ORDERED. (X BEING O-RING CHOICE E, F, OR V).

MATERIAL NOTES:
 MATERIAL TO BE TYPE 304/316L STAINLESS STEEL. SHEET/PLATE STOCK PER A.S.M.E. SPEC. SA-240. BAR STOCK PER A.S.M.E. SPEC. SA-479. WROUGHT/FORGED STOCK PER A.S.M.E. SPEC. SA-182. WELDED OR SEAMLESS PIPE PER A.S.M.E. SPEC. SA-312. TUBING PER A.S.M.E. SPEC. SA-249.

NOTES:

- CONSTRUCTION MEETS LATEST A.S.M.E. "UM" CODE AND ADDENDA.
- ALL WELDS TO BE GTAW (OR) AND GMAW.
- MAXIMUM WORKING PRESSURE: 132 P.S.I.G. @ 100°F.
- HYDROSTATIC TEST: 198 P.S.I.G.
- FINISH: WHITE PICKLE. WELDS ARE AS WELDED.

NOTICE THIS DRAWING AND THE DATA SHOWN ARE PROPRIETARY INFORMATION AND SHALL NOT BE USED WITHOUT APPROVAL OF ALLOY PRODUCTS CORP.	BT-9 BT-23	UNLESS OTHERWISE SPECIFIED	DRAWN PH	DATE	TITLE 9" I.D. TANK ASSEMBLY W/METAL SKT. & LOC 1 GALLON A.S.M.E. 316L
		TOLERANCES	APPROVED PE	10-03-95	
		.XX DECIMALS ± .030 .XXX DECIMALS ± .015 ANGLES ± 1°	SCALE NONE		
	REMOVE BURRS & SHARP EDGES	ALLOY PRODUCTS CORP. WAUKESHA, WISCONSIN		DWG. NO. B530-2077-00	REVISION Q