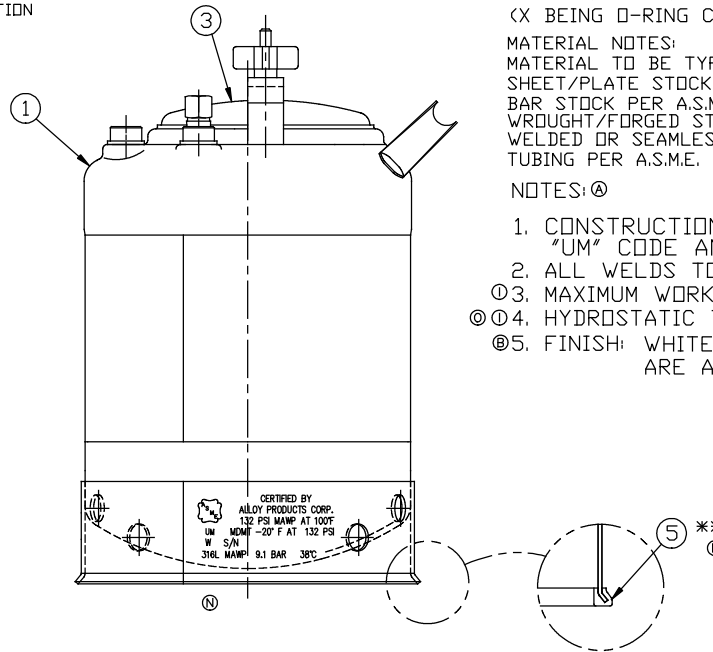
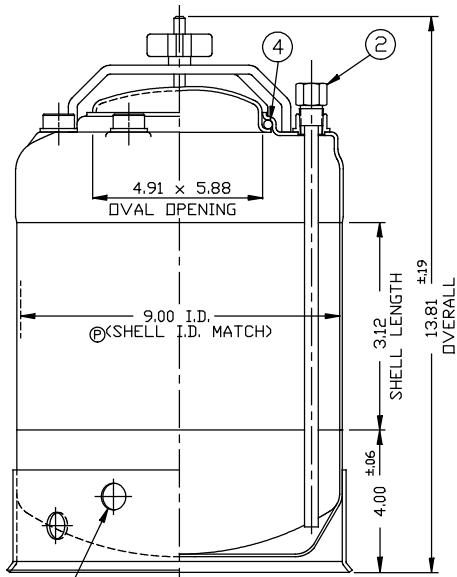
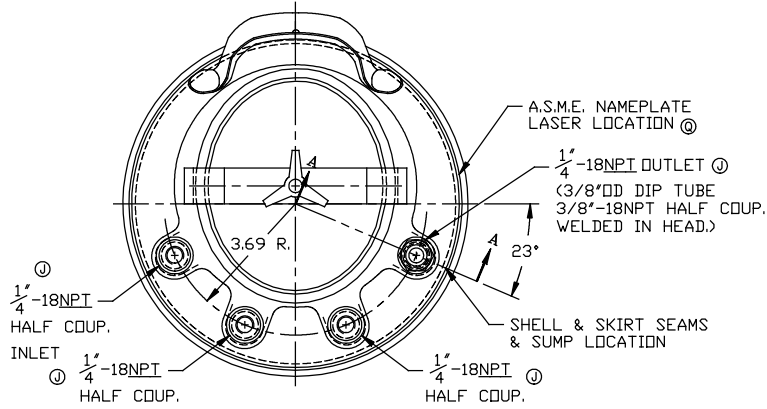


REVISION
A) 4-28-2000
C/O12677
B) 4-28-2000
C/O13280
C) 4-28-2000
C/O13332
D) 4-28-2000
C/O12743
E) 4-28-2000
C/O12322
F) 4-28-2000
C/O13461
G) 7-25-2001
C/O14101
H) 9-26-2006
C/O15555
I) 10-23-2006
C/O15614
J) 4-21-2008
C/O15884
K) 8-11-2008
C/O15938
L) 10-15-2008
C/O15992
M) 4-14-2010
C/O16194
N) 2-06-2013
C/O16694
O) 6-04-2013
C/O16771
P) 01-22-2018
C/O17425
Q) 01-22-2018
C/O17692



ITEM	DWG./PART NO.	MATERIAL	QTY.
①	C208-0353-00	LDC 9" TANK WELDMENT	316L 1
②	A206-1738-00	DIP TUBE ASSEMBLY	316L 1
③	B506-0065-00	VACUUM LID ASSEMBLY	316L 1
* ④	A100-0376-00	CLOSURE SEAL O-RING	⑥ E.P.D.M.
	A100-0280-00		VITON
	A100-0383-00		⑥ T.E.V.
** ⑤	A109-0003-00	RUBBER BOOT	EPDM 1

*SEE CURRENT SHOP ORDER FOR O-RING TYPE TO BE USED.

① **ITEM 5 IS OPTIONAL. INSTALL ONTO SKIRT WHEN P/N B530-2082-00-X-R IS ORDERED. (X BEING O-RING CHOICE E, F, OR V).

MATERIAL NOTES:

MATERIAL TO BE TYPE 304/316L STAINLESS STEEL. SHEET/PLATE STOCK PER A.S.M.E. SPEC. SA-240. BAR STOCK PER A.S.M.E. SPEC. SA-479. WROUGHT/FORGED STOCK PER A.S.M.E. SPEC. SA-182. WELDED OR SEAMLESS PIPE PER A.S.M.E. SPEC. SA-312. TUBING PER A.S.M.E. SPEC. SA-249.

NOTES: ①

- CONSTRUCTION MEETS LATEST A.S.M.E. "UM" CODE AND ADDENDA.
- ALL WELDS TO BE GTAW (OR) AND GMAW.
- ③. MAXIMUM WORKING PRESSURE: 132 P.S.I.G. @ 100°F.
- ④. HYDROSTATIC TEST: 198 P.S.I.G.
- ⑤. FINISH: WHITE PICKLE, WELDS ARE AS WELDED.

BT-9	BT-23	CAL0446	NOTICE THIS DRAWING AND THE DATA SHOWN ARE PROPRIETARY INFORMATION AND SHALL NOT BE USED WITHOUT APPROVAL OF ALLOY PRODUCTS CORP.	UNLESS OTHERWISE SPECIFIED	DRAWN PH	DATE 10-03-95	TITLE 9"ID TANK ASSEMBLY 2 GAL. W/LARGE VACUUM CLOSURE & METAL SKIRT A.S.M.E. 316L
				TOLERANCES .XX DECIMALS ± .030 .XXX DECIMALS ± .015 ANGLES ± 1°	APPROVED PE		
REMOVE BURRS & SHARP EDGES				SCALE NONE	DWG. NO. B530-2082-00	REVISION Q	