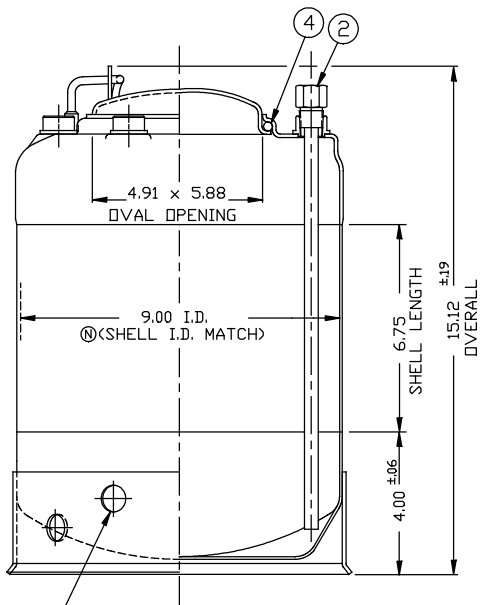
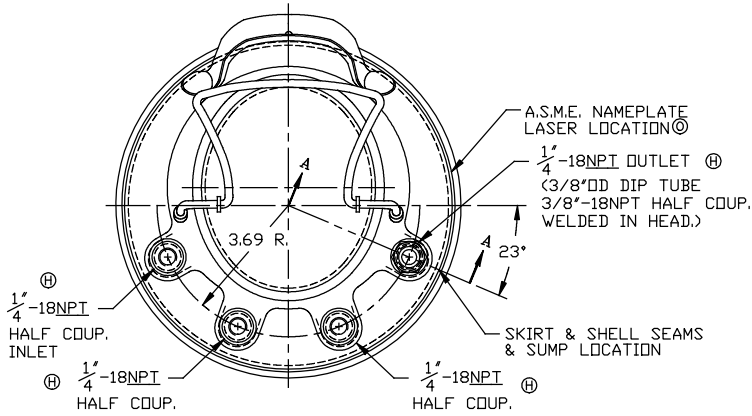
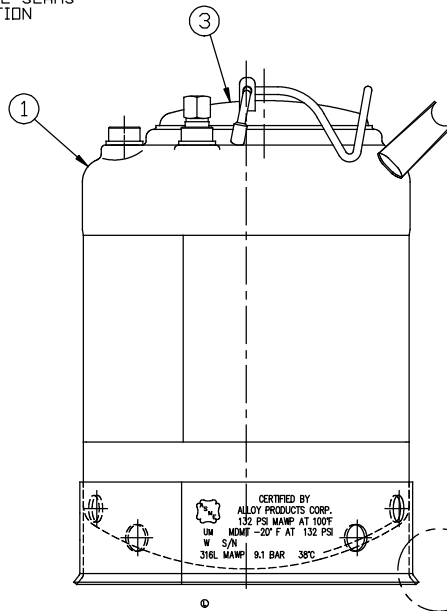


REVISION
A) 12-10-97
C/O12677
B) 6-21-2000
C/O13280
C) 6-21-2000
C/O13332
D) 6-21-2000
C/O13461
E) 7-25-2001
C/O14101
F) 9-26-2006
C/O15555
G) 10-20-2006
C/O15614
H) 4-23-2008
C/O15884
I) 8-21-2008
C/O15938
J) 10-15-2008
C/O15992
K) 4-9-2010
C/O16194
L) 1-14-2013
C/O16694
M) 6-04-2013
C/O16771
N) 01-24-2018
C/O17425
O) 01-24-2018
C/O17692



2 DRAIN HOLES IN SKIRT - 180° APART.



ITEM	DWG./PART NO.	MATERIAL	QTY.
Ⓚ ①	C208-0354-00	LOC 9" TANK WELDMENT	316L 1
②	A206-1739-00	DIP TUBE ASSEMBLY	316L 1
③	C506-0066-00	CLOSURE LID ASSEMBLY	316L 1
* ④	A100-0376-00 A100-0280-00 A100-0383-00	CLOSURE SEAL O-RING	E.P.D.M. VITON ⓀT.E.V. 1
** ⑤	A109-0003-00	RUBBER BOOT	EPDM 1

* SEE CURRENT SHOP ORDER FOR O-RING TYPE TO BE USED.

Ⓚ ** ITEM 5 IS OPTIONAL. INSTALL DNTD SKIRT WHEN P/N B530-2085-00-X-R IS ORDERED. (X BEING O-RING CHOICE E, F, OR V).

MATERIAL NOTES:
MATERIAL TO BE TYPE 304/316L STAINLESS STEEL. SHEET/PLATE STOCK PER A.S.M.E. SPEC. SA-240. BAR STOCK PER A.S.M.E. SPEC. SA-479. WROUGHT/FORGED STOCK PER A.S.M.E. SPEC. SA-182. WELDED OR SEAMLESS PIPE PER A.S.M.E. SPEC. SA-312. TUBING PER A.S.M.E. SPEC. SA-249.

NOTES:

1. CONSTRUCTION MEETS LATEST A.S.M.E. "UM" CODE AND ADDENDA.

2. ALL WELDS TO BE GTAW (OR) AND GMAW

Ⓚ ③. MAXIMUM WORKING PRESSURE: 132 P.S.I.G. @ 100°F.

Ⓚ Ⓚ ④. HYDROSTATIC TEST: 198 P.S.I.G.

Ⓚ Ⓚ ⑤. FINISH: WHITE PICKLE.

WELDS ARE AS WELDED.

NOTICE THIS DRAWING AND THE DATA SHOWN ARE PROPRIETARY INFORMATION AND SHALL NOT BE USED WITHOUT APPROVAL OF ALLOY PRODUCTS CORP.	BT-9 BT-23	CALO446	UNLESS OTHERWISE SPECIFIED	DRAWN PH	DATE	TITLE 9" ID TANK ASSEMBLY W/METAL SKT. & LOC 3 GALLON A.S.M.E. 316L	
			TOLERANCES	APPROVED PE	10-03-95		
			.XX DECIMALS ± .030 .XXX DECIMALS ± .015 ANGLES ± 1°	SCALE NONE			
			REMOVE BURRS & SHARP EDGES			DWG. NO. B530-2085-00	REVISION
			ALLOY PRODUCTS CORP. WAUKESHA, WISCONSIN				