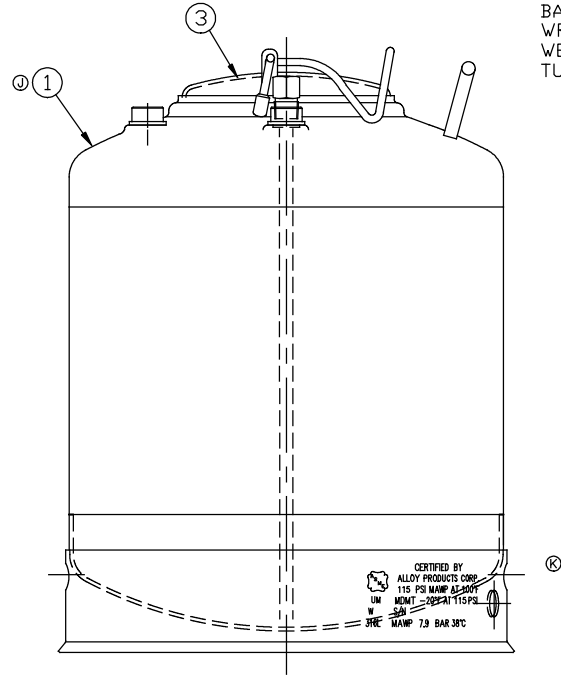
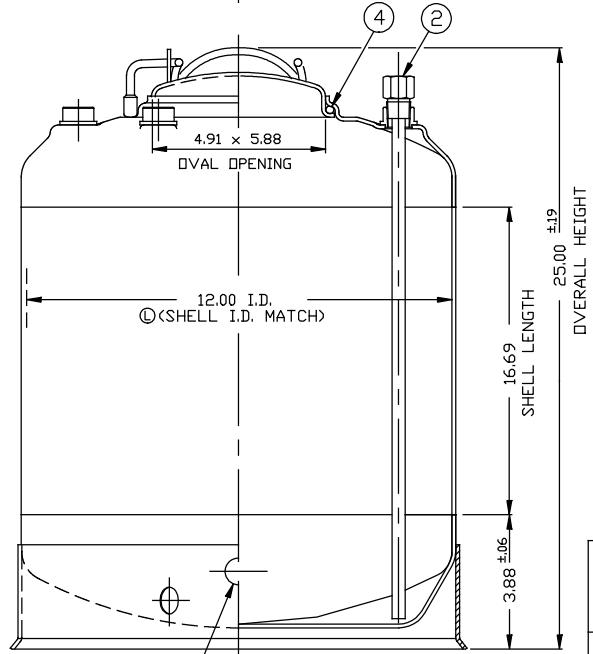
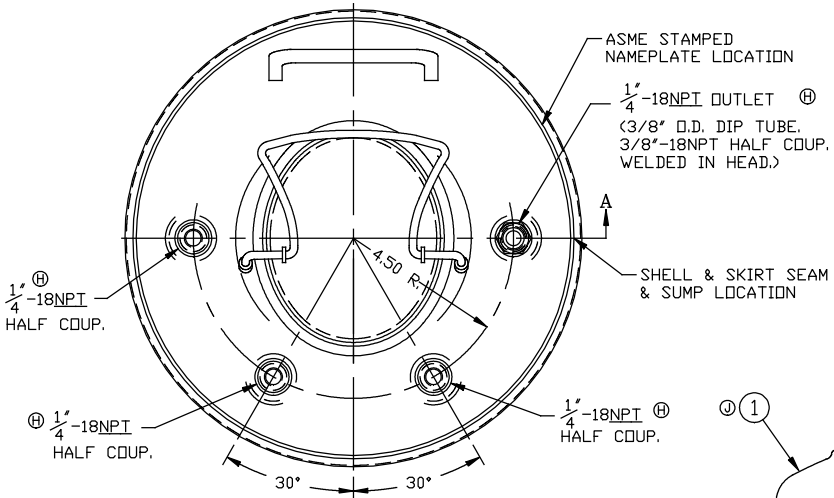


REVISION
A) 12-03-96
C/O 12488
B) 8-7-97
C/O 12677
C) 7-26-99
C/O 13280
D) 7-26-99
C/O 13332
E) 7-26-99
C/O 13461
F) 7-26-2001
C/O 14101
G) 5-23-2006
C/O 15517
H) 5-13-2008
C/O 15884
I) 8-21-2008
C/O 15938
J) 3-30-2011
C/O 16278
K) 2-13-2013
C/O 16694
L) 06-12-2017
C/O 17425



ITEM	DWG./PART NO.	MATERIAL	QTY.
①	C208-0437-00	LOC 12" TANK WELDMENT	316L 1
②	A206-1746-00	DIP TUBE ASSEMBLY	316L 1
③	C506-0066-00	CLOSURE LID ASSEMBLY	316L 1
* ④	A100-0376-00 A100-0280-00 A100-0383-00	CLOSURE SEAL O-RING	E.P.D.M. VITON T.E.V. 1

* SEE CURRENT SHOP ORDER FOR O-RING TYPE TO BE USED.

MATERIAL NOTES:
MATERIAL TO BE TYPE 316L STAINLESS STEEL. SHEET/PLATE STOCK PER A.S.M.E. SPEC. SA-240. BAR STOCK PER A.S.M.E. SPEC. SA-479. WROUGHT/FORGED STOCK PER A.S.M.E. SPEC. SA-182. WELDED/SEAMLESS PIPE PER A.S.M.E. SPEC. SA-312. TUBING PER A.S.M.E. SPEC. SA-249.

- ① NOTES:
- CONSTRUCTION MEETS THE LATEST A.S.M.E. "UM" CODE AND ADDENDA.
 - ALL WELDS TO BE GTAW (OR) AND GMAW.
 - MAXIMUM WORKING PRESSURE: 115 P.S.I.G. @ 100 °F.
 - HYDROSTATIC TEST: 150 P.S.I.G. ①
 - FINISH: INSIDE & OUTSIDE, WHITE PICKLE. WELDS ARE AS WELDED.

DRAIN IN SKIRT-2 HOLES 180° APART

BT-19	BT-21	CAL0882	NOTICE THIS DRAWING AND THE DATA SHOWN ARE PROPRIETARY INFORMATION AND SHALL NOT BE USED WITHOUT APPROVAL OF ALLOY PRODUCTS CORP.	UNLESS OTHERWISE SPECIFIED TOLERANCES .XX DECIMALS ± .030 .XXX DECIMALS ± .015 ANGLES ± 1° REMOVE BURRS & SHARP EDGES	DRAWN PH	DATE 10-03-95	TITLE 12"ID TANK ASSEMBLY LOC STANDARD LID 10 GALLON W/METAL SKIRT A.S.M.E. 316L
					APPROVED PE		
ALLOY PRODUCTS CORP. WAUKESHA, WISCONSIN					SCALE NONE	DWG. NO. B530-2121-00	REVISION L