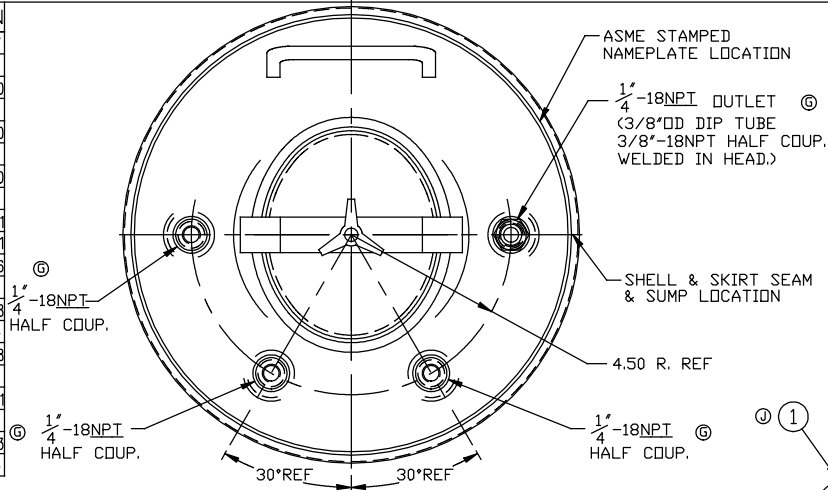


REVISION
A) 10-10-97
C/012677
B) 6-23-2000
C/013280
C) 6-23-2000
C/013332
D) 6-23-2000
C/013461
E) 7-26-2001
C/014101
F) 5-23-2006
C/015517
G) 5-13-2008
C/015884
H) 8-21-2008
C/015938
J) 3-30-2011
C/016278
K) 2-13-2013
C/016694



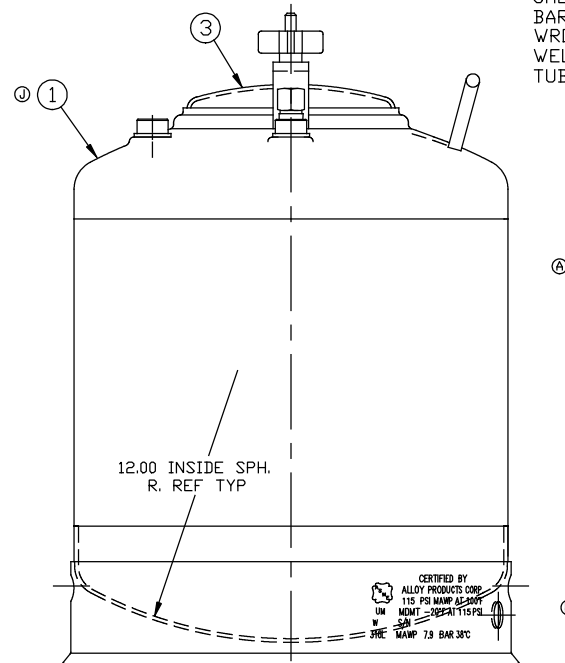
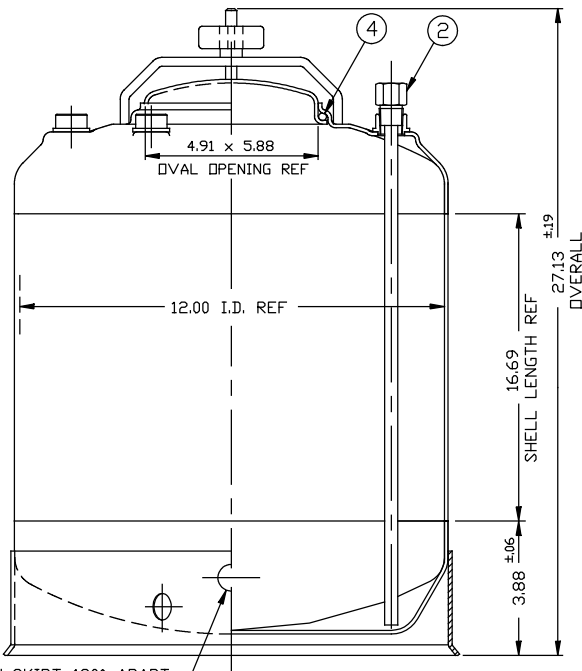
ITEM	DWG./PART NO.	MATERIAL	QTY.
①	C208-0437-00	LDC 12" TANK WELDMENT	316L 1
②	A206-1746-00	DIP TUBE ASSEMBLY	316L 1
③	B506-0065-00	LARGE VACUUM LID	316L 1
* ④	A100-0376-00	CLOSURE SEAL O-RING	④ E.P.D.M.
	A100-0280-00		VITON
	A100-0383-00		④ T.E.V.

\*SEE CURRENT SHOP ORDER FOR O-RING TYPE TO BE USED.

MATERIAL NOTES:  
 MATERIAL TO BE T-316L STAINLESS STEEL.  
 SHEET/PLATE STOCK PER A.S.M.E. SPEC. SA-240.  
 BAR STOCK PER A.S.M.E. SPEC. SA-479.  
 WROUGHT/FORGED STOCK PER A.S.M.E. SPEC. SA-182.  
 WELDED/SEAMLESS PIPE PER A.S.M.E. SPEC. SA-312.  
 TUBING PER A.S.M.E. SPEC. SA-249.

NOTES:

- CONSTRUCTION MEETS LATEST A.S.M.E. "UM" CODE AND ADDENDA.
- ALL WELDS TO BE GTAW (OR) AND GMAW.
- MAXIMUM WORKING PRESSURE: 115 P.S.I.G. @ 100°F.
- HYDROSTATIC TEST: 150 P.S.I.G. ④
- FINISH: WHITE PICKLE. ④  
WELDS ARE AS WELDED.



BT-19	CAL0882	NOTICE THIS DRAWING AND THE DATA SHOWN ARE PROPRIETARY INFORMATION AND SHALL NOT BE USED WITHOUT APPROVAL OF ALLOY PRODUCTS CORP.	UNLESS OTHERWISE SPECIFIED TOLERANCES .XX DECIMALS ± .030 .XXX DECIMALS ± .015 ANGLES ± 1° REMOVE BURRS & SHARP EDGES	DRAWN PH	DATE 10-03-95	TITLE 12" ID TANK ASSEMBLY W/LARGE VACUUM LID 10 GALLON A.S.M.E. 316L
				APPROVED PE		
BT-21				SCALE NONE	DWG. NO. B530-2122-00	REVISION K