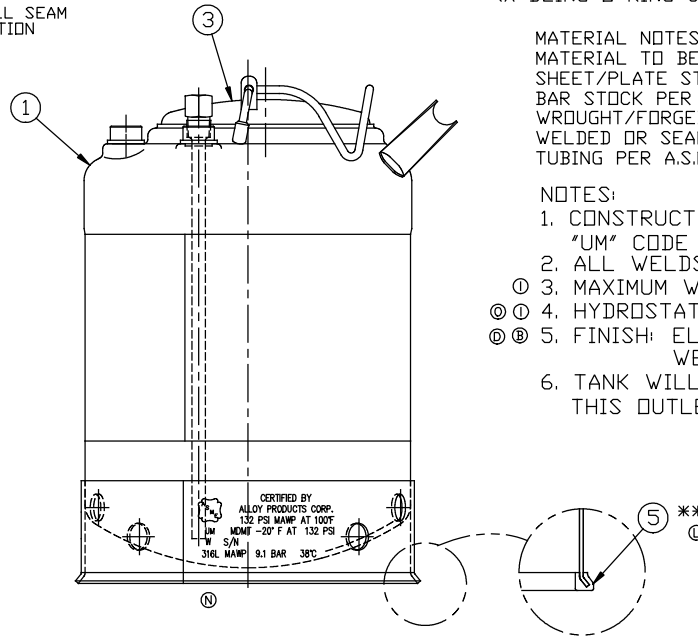
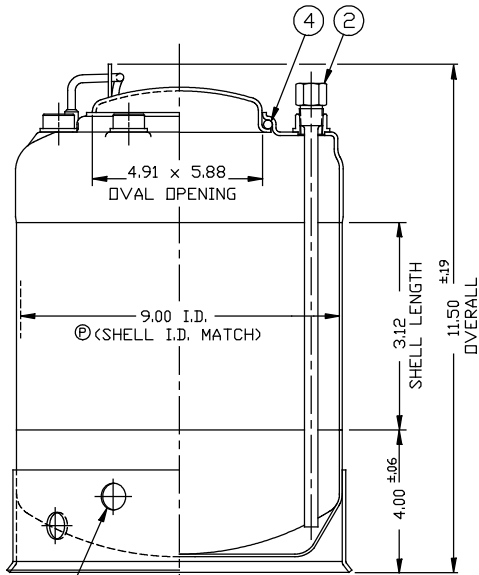
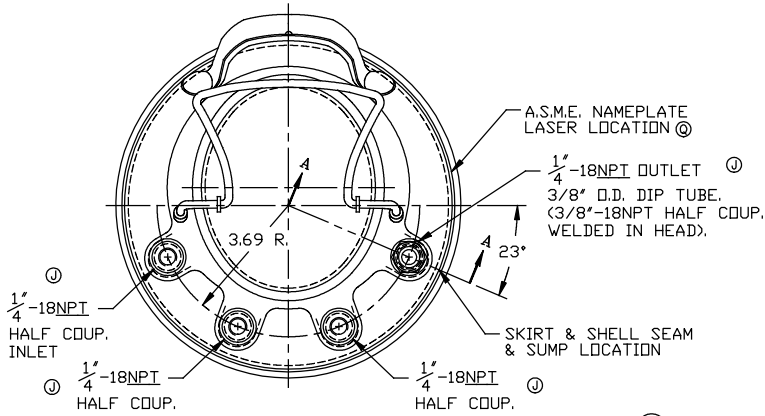


REVISION
A) 06-16-98
C/012743
B) 06-16-98
C/012677
C) 06-16-98
C/012322
D) 6-21-2000
C/013280
E) 6-21-2000
C/013332
F) 6-21-2000
C/013461
G) 7-25-2001
C/014101
H) 9-26-2006
C/015555
I) 10-20-2006
C/015614
J) 4-23-2008
C/015884
K) 8-25-2008
C/015938
L) 10-15-2008
C/015992
M) 4-9-2010
C/016194
N) 2-06-2013
C/016694
O) 6-05-2013
C/016771
P) 01-22-2018
C/017425
Q) 01-22-2018
C/017692



ITEM	DWG./PART NO.	MATERIAL	QTY.
①	C208-0353-00	LOC 9" TANK WELDMENT	316L 1
②	A206-1336-00	DIP TUBE	316L 1
③	C506-0126-00	CLOSURE LID ASSEMBLY	316L 1
* ④	A100-0376-00 A100-0280-00 A100-0383-00	CLOSURE SEAL O-RING	③ E.P.D.M. ④ VITON ⑤ T.E.V. 1
** ⑤	A109-0003-00	RUBBER BOOT	EPDM 1

* SEE CURRENT SHOP ORDER FOR O-RING TYPE TO BE USED.

① ** ITEM 5 IS OPTIONAL. INSTALL ONTO SKIRT WHEN P/N B530-2153-00-X-R IS ORDERED. (X BEING O-RING CHOICE E, F, OR V).

MATERIAL NOTES:
MATERIAL TO BE TYPE 304/316L STAINLESS STEEL. SHEET/PLATE STOCK PER A.S.M.E. SPEC. SA-240. BAR STOCK PER A.S.M.E. SPEC. SA-479. WROUGHT/FORGED STOCK PER A.S.M.E. SPEC. SA-182. WELDED OR SEAMLESS PIPE PER A.S.M.E. SPEC. SA-312. TUBING PER A.S.M.E. SPEC. SA-249.

NOTES:

- CONSTRUCTION MEETS LATEST A.S.M.E. "UM" CODE AND ADDENDA.
- ALL WELDS TO BE GTAW (OR) AND GMAW
- ① 3. MAXIMUM WORKING PRESSURE: 132 P.S.I.G. @ 100°F.
- ① 4. HYDROSTATIC TEST: 198 P.S.I.G.
- ② ② 5. FINISH: ELECTRO-POLISH INSIDE & OUT. WELDS ARE AS WELDED.
- TANK WILL NOT BE FULLY DRAINABLE WITH THIS OUTLET DESIGN.

NOTICE THIS DRAWING AND THE DATA SHOWN ARE PROPRIETARY INFORMATION AND SHALL NOT BE USED WITHOUT APPROVAL OF ALLOY PRODUCTS CORP.	BT-9 BT-23	CAL046	UNLESS OTHERWISE SPECIFIED	DRAWN PH	DATE 10-04-95	TITLE 9"ID TANK ASSEMBLY W/METAL SKT. & LOC 2 GALLONS
			TOLERANCES .XX DECIMALS ± .030 .XXX DECIMALS ± .015 ANGLES ± 1°	APPROVED PE	SCALE NONE	A.S.M.E. 316L
			REMOVE BURRS & SHARP EDGES	DWG. NO. B530-2153-00		REVISION Q
ALLOY PRODUCTS CORP. WAUKESHA, WISCONSIN						