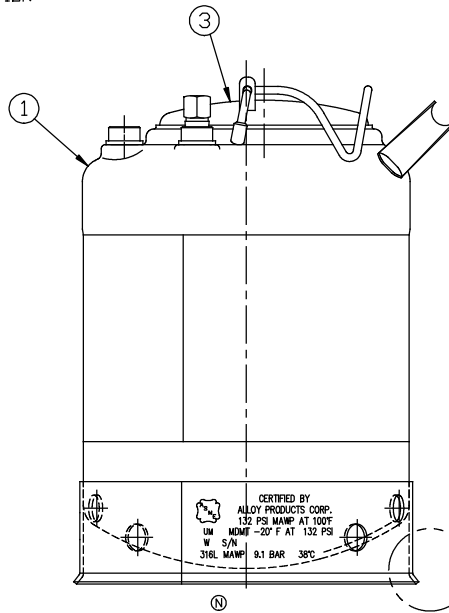
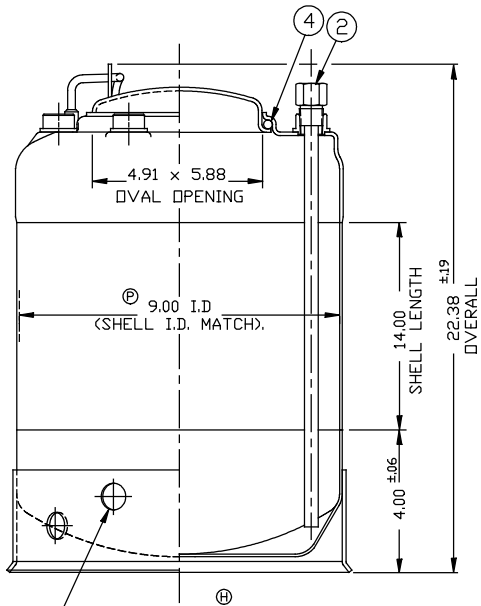
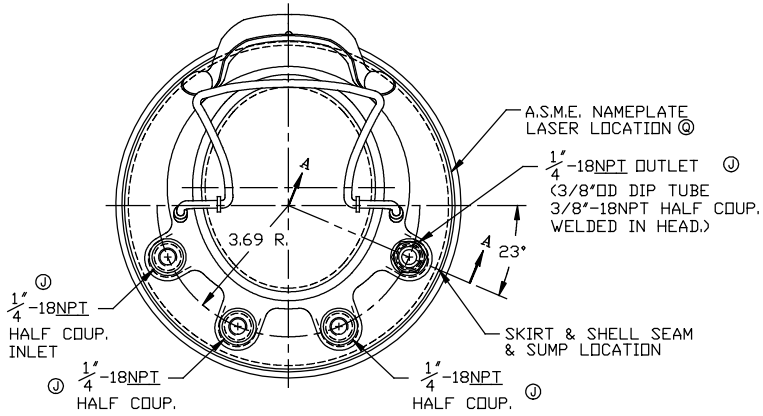


| REVISION |
|---------------|
| A) 06-16-98 |
| C/O12743 |
| B) 06-16-98 |
| C/O12677 |
| C) 06-16-98 |
| C/O12322 |
| D) 6-21-2000 |
| C/O13280 |
| E) 6-21-2000 |
| C/O13332 |
| F) 6-21-2000 |
| C/O13461 |
| G) 7-25-2001 |
| C/O14101 |
| H) 9-28-2006 |
| C/O15555 |
| I) 10-20-2006 |
| C/O15614 |
| J) 4-24-2008 |
| C/O15884 |
| K) 8-26-2008 |
| C/O15938 |
| L) 10-15-2008 |
| C/O15992 |
| M) 4-9-2010 |
| C/O16194 |
| N) 2-06-2013 |
| C/O16694 |
| O) 6-05-2013 |
| C/O16771 |
| P) 7-21-2017 |
| C/O17425 |
| Q) 7-21-2017 |
| C/O17692 |



| ITEM | DWG./PART NO. | MATERIAL | QTY. |
|------|--|----------------------|-------------------------------------|
| ① | C208-0356-00 | LOC 9" TANK WELDMENT | 316L 1 |
| ② | A206-1339-00 | DIP TUBE | 316L 1 |
| ③ | C506-0126-00 | CLOSURE LID ASSEMBLY | 316L 1 |
| ④ | A100-0376-00 A100-0280-00 A100-0383-00 | CLOSURE SEAL O-RING | ④ E.P.D.M. ④ VITON ④ T.E.V. 1 |
| ⑤ | A109-0003-00 | RUBBER BOOT | EPDM 1 |

*SEE CURRENT SHOP ORDER FOR O-RING TYPE TO BE USED.

① *** ITEM 5 IS OPTIONAL. INSTALL ONTO SKIRT WHEN P/N B530-2161-00-X-R IS ORDERED. (X BEING O-RING CHOICE E, F, OR V).

MATERIAL NOTES:

MATERIAL TO BE TYPE 304/316L STAINLESS STEEL. SHEET/PLATE STOCK PER A.S.M.E. SPEC. SA-240. BAR STOCK PER A.S.M.E. SPEC. SA-479. WROUGHT/FORGED STOCK PER A.S.M.E. SPEC. SA-182. WELDED OR SEAMLESS PIPE PER A.S.M.E. SPEC. SA-312. TUBING PER A.S.M.E. SPEC. SA-249.

NOTES:

- CONSTRUCTION MEETS LATEST A.S.M.E. "UM" CODE AND ADDENDA.
- ALL WELDS TO BE GTAW (OR) AND GMAW
- MAXIMUM WORKING PRESSURE: 132 P.S.I.G. @ 100 F.
- HYDROSTATIC TEST: 198 P.S.I.G.
- FINISH: ELECTRO-POLISH INSIDE & OUT. WELDS ARE AS WELDED.

| | | | | | | |
|--|-------|--|---|--------------------------|---|---------------|
| NOTICE THIS DRAWING AND THE DATA SHOWN ARE PROPRIETARY INFORMATION AND SHALL NOT BE USED WITHOUT APPROVAL OF ALLOY PRODUCTS CORP. | BT-23 | UNLESS OTHERWISE SPECIFIED TOLERANCES .XX DECIMALS ± .030 .XXX DECIMALS ± .015 ANGLES ± 1° REMOVE BURRS & SHARP EDGES | DRAWN PH | DATE 10-04-95 | TITLE 9"ID TANK ASSEMBLY W/METAL SKT. & LOC 5 GALLONS A.S.M.E. 316L | |
| | BT-9 | | APPROVED PE | | | |
| | BT-9 | | SCALE NONE | DWG. NO. B530-2161-00 | | REVISION Q |
| | BT-9 | | CAL046 ALLOY PRODUCTS CORP. WAUKESHA, WISCONSIN | | | |