

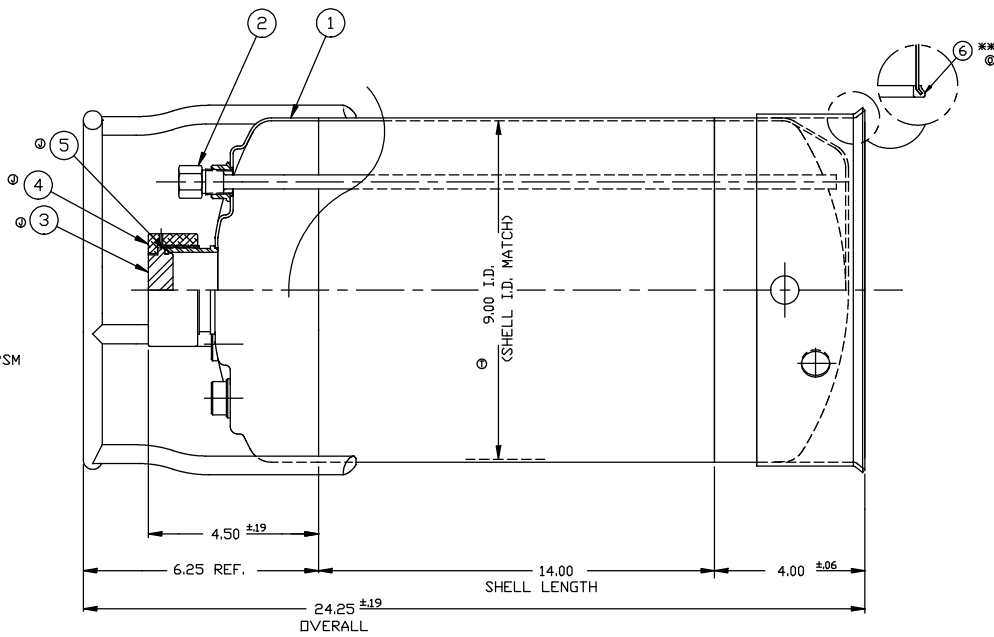
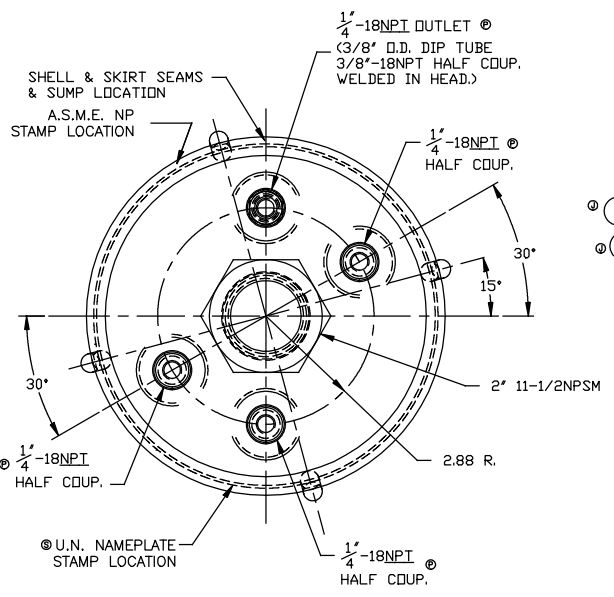
REVISION
① E-15-2000
C/012729
② E-15-2000
C/012743
③ E-15-2000
C/013280
④ E-15-2000
C/013332
⑤ E-15-2000
C/013765
⑥ H-28-2000
C/013860
⑦ H-27-2000
C/014101
⑧ E-08-2004
C/015092
⑨ H-02-2005
C/015217
⑩ I-07-2006
C/015443
⑪ E-24-2006
C/015555
⑫ H-01-2008
C/015614
⑬ E-02-2008
C/015905
⑭ E-09-2008
C/015938
⑮ H-15-2008
C/015992
⑯ S-27-2008
C/016053
⑰ L-19-2010
C/016194
⑱ L-27-2011
C/016336
⑳ T-20-2011
C/016439
㉑ H-28-2018
C/017425

- NOTES:
- CONSTRUCTION COMPLIES WITH LATEST REVISION OF U.N./DOT CFR 49 parts 171-180 AND A.S.M.E. 'UM' 2010 CODE & 2011 ADDENDA.
 - ALL WELDS TO BE GTAW (DR) AND GMAW.
 - MAXIMUM WORKING PRESSURE: 185 P.S.I.G. @100 *F.
 - HYDROSTATIC TEST: 241 P.S.I.G. @
 - AIR TEST: 15 P.S.I.G.
 - FINISH: WHITE PICKLE, WELDS ARE AS WELDED.
 - DROP, LEAKPROOF, STACKING, VIBRATION AND HYDROSTATIC TEST.
 - DROPTTEST: FOR DESIGN QUALIFICATION TESTING, DROP 3. FOR PERIODIC TESTING, DROP 1.
 - THE VESSEL WAS TESTED USING (4) 1/4" PIPE PLUGS AND ONE APC STANDARD CLOSURE LID ASSEMBLY B506-0039-00.

MATERIAL NOTES:
 MATERIAL TO BE TYPE 304/316/316L STAINLESS STEEL.
 SHEET/PLATE STOCK PER A.S.M.E. SPEC. SA-240.
 BAR STOCK PER A.S.M.E. SPEC. SA-479.
 WROUGHT/FORGED STOCK PER A.S.M.E. SPEC. SA-182.
 WELDED OR SEAMLESS PIPE PER A.S.M.E. SPEC. SA-312.
 TUBING PER A.S.M.E. SPEC. SA-249.
 ALUMINUM BAR STOCK PER A.S.M.E. SPEC. SB-211.

ITEM	DWG./PART NO.	MATERIAL	QTY.
①	C208-0405-00	CODE2 9" TANK WELDMNT 316L	1
②	A206-1740-00	DIP TUBE ASSEMBLY 316L	1
③	A011-0205-01	C2 CLOSURE ENDCAP 316L	1
④	A003-0052-00	2"-11 1/2NPS HEX NUT ALUM	1
⑤	A100-0309-00	O-RING	TEFLON 1
	A100-0278-00	O-RING	VITON 1
	A100-0279-00	O-RING	EPDM 1
⑥	A109-0003-00	RUBBER BOOT	EPDM 1

* SEE CURRENT SHOP ORDER FOR O-RING TYPE TO BE USED.
 ** ITEM 6 IS OPTIONAL. INSTALL ONTO SKIRT WHEN P/N C533-0178-00-X-R IS ORDERED. (X BEING O-RING CHOICE E, F, OR V).



BT-22 BT-23	CA10446	NOTICE THIS DRAWING AND THE DATA SHOWN ARE PROPRIETARY INFORMATION AND SHALL NOT BE USED WITHOUT APPROVAL OF ALLOY PRODUCTS CORP.	UNLESS OTHERWISE SPECIFIED	DRAWN	PS	DATE	TITLE
			TOLERANCES XX DECIMALS ± .030 XXX DECIMALS ± .015 ANGLES ± 1°	APPROVED	PE	4-22-97	
			REMOVE BURRS & SHARP EDGES	SCALE	NDNE	DWG. NO.	REVISION
			ALLOY PRODUCTS CORP. WAUKESHA, WISCONSIN			C533-0178-00	T